

GARDEN WAY

by **TROY-BILT**

Parts Catalog

8HP Model Tiller

Model

12194

Serial Numbers:

121941100101 - 121941199999

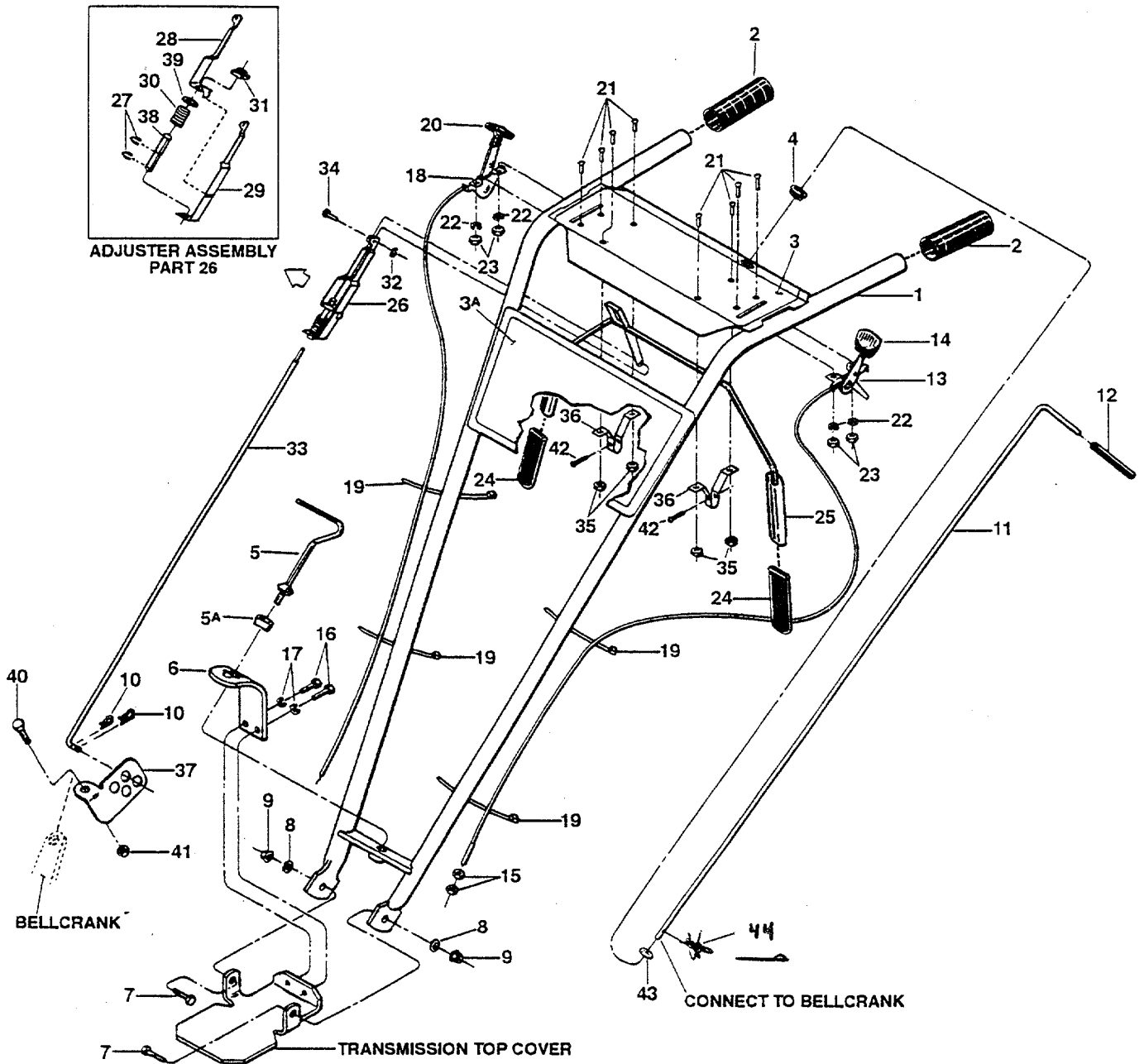


GARDEN WAY INCORPORATED

Not For Resale

www.SmallEngineDiscount.com

HANDLEBAR ASSEMBLY AND CONTROL LEVERS

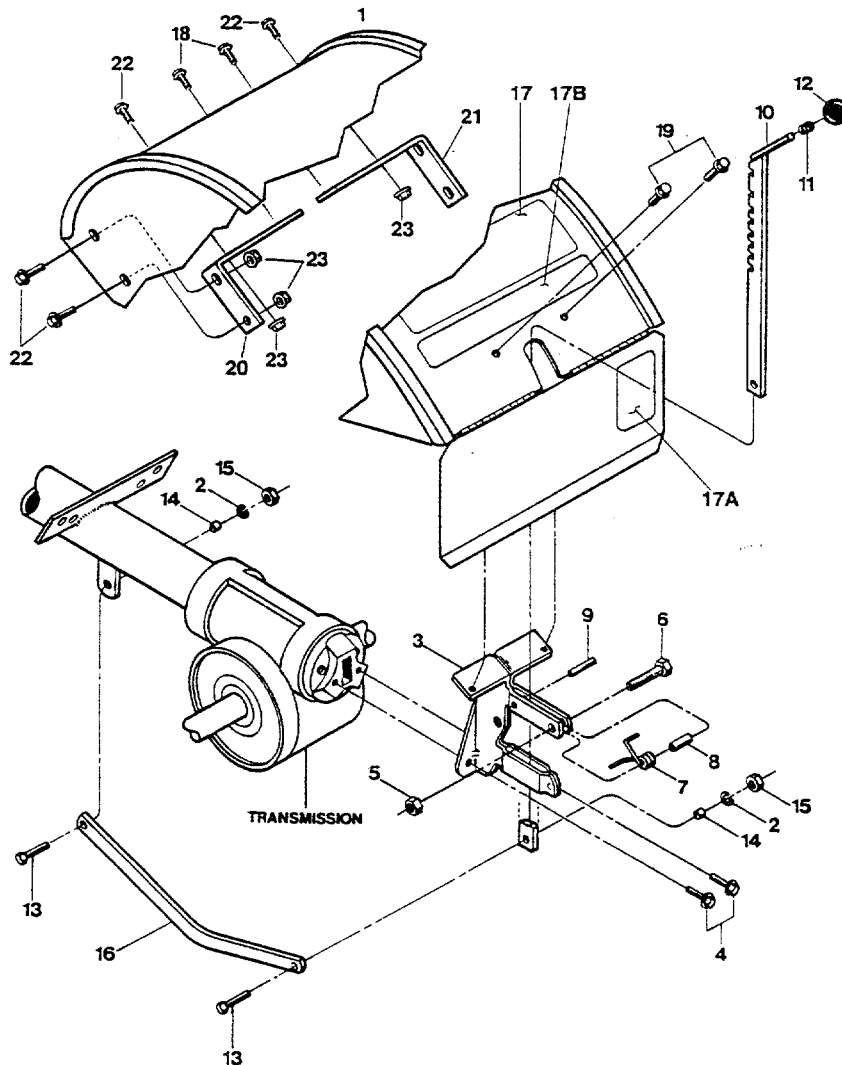


HANDLEBAR ASSEMBLY AND CONTROL LEVERS

REF No.	PART No.	DESCRIPTION	QTY.	REF No.	PART No.	DESCRIPTION	QTY.
1	1917117	Handlebars--(incl. Ref. No.'s 2, 3, 3A and 4)	1	21	1114748	Screw--round hd, No. 10-32 x 1/2.	8
2	9126	Grip--handlebars	2	22	1100240	Lockwasher--No. 10.....	4
3	1916927	Decal-- for operator control panel ..	1	23	1186208	Nut--hex, No. 10-32	4
3A	1916926	Decal-- Logo	1	24	9390	Grip--paddle.....	2
4	9251	Grommet--plastic (part of operator control panel).....	1	25	20863	Bail--forward clutch control (incl. two Grips, Ref. No. 24)	1
5	1186347	Handle, height adjustment.....	1	26	20862	Adjuster Assembly (incl. Ref. No.'s 27, 28, 29, 30, 38 and 39).....	1
5A	9955	Washer--keyed	1	27	9532	Klip Ring.....	2
6	1900475001	Bracket--handlebar height adjust ...	1	28	20808	Adjuster, Right Side.....	1
7	1100046	Screw--hex hd., 3/8-16 x 1*.....	2	29	20809	Adjuster, Left Side	1
8	9904	Washer--plain (flat) 3/8, S.A.E.....	2	30	9059	Spring--Adjuster.....	1
9	9837	Locknut--hex, 3/8-16	2	31	9522	Nut--rectangular.....	1
10	9338	Hair Pin Cotter	2	32	9386	Klip Ring.....	1
11	1916896	Reverse Clutch Lever--complete (incl. grip, #9198).....	1	33	20831	Rod--forward clutch.....	1
12	9198	Grip--reverse clutch lever.....	1	34	97083	Pin--Clevis.....	1
13	1916639	Wheel Gear Control & Cable Assy.	1	35	9853	Sems Nut.....	4
14	9057	Knob--wheel gear control lever	1	36	20806	Bracket--bail support.....	2
15	1186211	Nut--hex, 5/16-24, wheel gear cable adjustment.....	2	37	20888	Swivel.....	1
16	1100068	Screw--hex hd., 3/8-16 x 3/4*	2	38	9432	Bushing	1
17	1100243	Lockwasher--3/8.....	2	39	9973	Washer	1
18	9445	Engine Throttle Control & Cable	2	40	1100805	Screw--hex hd., 1/4-20 x 3/4*	1
19	9202	Ties--plastic.....	4	41	9811	Nut--1/4-20	1
20	9212	Knob--throttle control lever.....	1	42	9552	Screw--flanged hex hd, self-tapping, 1/4-20 x 1/2*	2
				43	20545	Washer-- flat, 5/16"	1
				44	1185147	Pin-Cotter	1

* Specify GRADE 5 if ordering part locally.

HOOD, BRACKET AND DEPTH REGULATOR



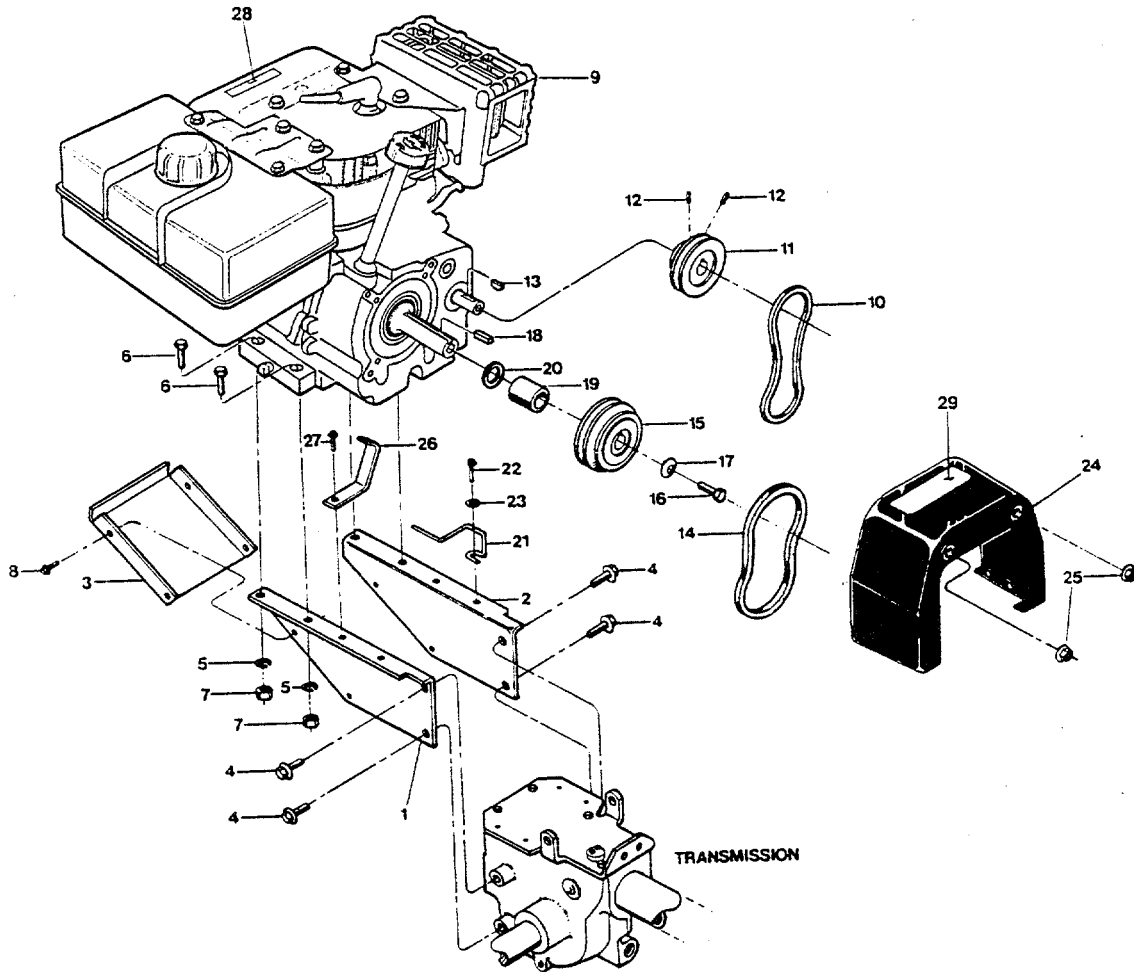
REF No.	PART No.	DESCRIPTION	QTY.
1	1917118	Hood-tine cover, with hinged flap (Incl. Ref. No. 17, 17A and 17B)	1
2	1100243	Lockwasher-3/8	2
3	1916184001	Bracket-hood & depth regulator	1
4	90038	Screw-flanged hex hd., 5/16-18 x 5/8*	2
5	9811	Locknut-hex, 1/4-20	1
6	1100069	Screw-hex hd., 1/4-20 x 1*	1
7	9384	Spring-depth regulator plunger	1
8	9438	Spacer	1
9	9308	Roll Pin-1/4 x 1 (spiral)	1
10	1916186001	Bar Assembly-depth adjustment	1
11	9120	Ring-retaining, tolerance ring	1
12	9119	Knob-depth regulator (Incl. Ref. No. 11)	1

REF No.	PART No.	DESCRIPTION	QTY.
13	1100043	Screw-hex hd, 3/8-16 x 1-1/4*	2
14	1113-1	Bushing-spacer, drag bar	2
15	1186231	Nut-hex, 3/8-16	2
16	1916185001	Drag Bar-depth regulator	1
17	1916805	Decal-tiller operating instructions	1
17A	1911361	Decal- Warning	1
17B	1916919	Decal- Logo	1
18	1766984	Screw-hex hd, self-tapping, 5/16-18 x 1/2*	2
19	9552	Screw-flanged hex hd, self-tapping, 1/4-20 x 1/2*	2
20	1916700001	Bracket- support, left	2
21	1916701001	Bracket- support, right	1
22	1186328	Bolt- hex hd., 5/16"-18 x 5/8"	6
23	1186391	Nut- hex, 5/16"-18	6

* Specify GRADE 5 if ordering part locally.

Not For Resale

ENGINE, SUPPORT BRACKETS, PULLEYS, BELTS AND BELT COVER



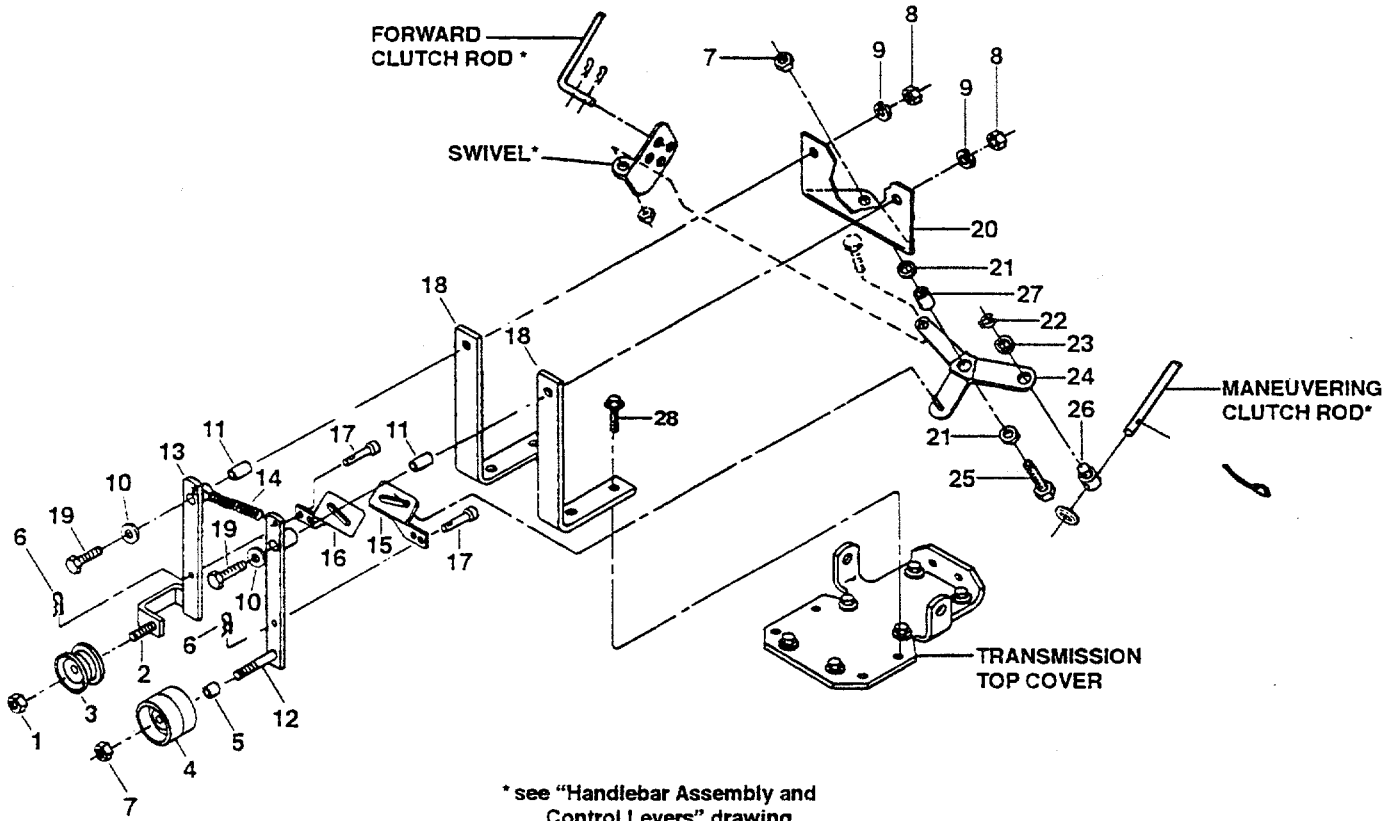
REF No.	PART No.	DESCRIPTION	QTY.
1	1916604001	Support Bracket—engine, left side	1
2	1916602001	Support Bracket—engine, right side.....	1
3	1916189001	Support Bracket (Pan)—engine, front.....	1
4	1186329	Screw—flanged hex hd., 5/16-18 x 3/4*	4
5	1100242	Lockwasher—5/16.....	4
6	1100799	Screw—hex hd., 5/16-18 x 1-1/2* ..	4
7	1186321	Nut—hex, 5/16-18	4
8	1900396	Screw—hex hd., 10-32 x 1/2, self-tapping	4
9	**	Engine.....	1
10	9022	Flat Belt—reverse drive.....	1
11	2477	Reverse Pulley—engine driven, for flat belt (Ref. No. 10)	1
12	9561	Set Screw—Socket Head, 1/4-20 x 1/4*	2
13	9361	Key—Woodruff (size #5)	1
14	1909404	V-Belt—forward drive	1

REF No.	PART No.	DESCRIPTION	QTY.
15	2476	Forward Pulley—engine drive, for V-Belt (Ref. No. 14).....	1
16	1100004	Screw—hex hd., 5/16-24 x 3/4*	1
17	9944	Washer—disc spring (concave surface faces forward pulley)	1
18	9301	Key—3/16 sq. x 1	1
19	97077	Spacer.....	1
20	1138-2	Shim	A/R
21	1916190001	Belt Guide—forward drive belt.....	1
22	9573	Screw—hex hd., self-tapping, 1/4-20 x 3/4*	1
23	9900	Washer—plain (flat), 1/4, S.A.E.	1
24	1904569	Cover—(incl. Ref. No.29)	1
25	1186391	Nut—5/16-18, locking, whiz-style ..	2
26	1916191001	Belt Guide—reverse drive belt	1
27	9552	Screw—flanged hex hd., self-tapping, 1/4-20 x 1/2*	1
28	1900766	Decal—Stabilization	1
29	1904557	Decal—Hot surfaces/belt warning ..	1

* Specify GRADE 5 if ordering part locally.

**Contact the factory or an authorized dealer for replacement engine information. See an authorized engine service dealer for engine parts or service. Refer to engine nameplate for engine type and code.

FORWARD/REVERSE IDLER ASSEMBLY



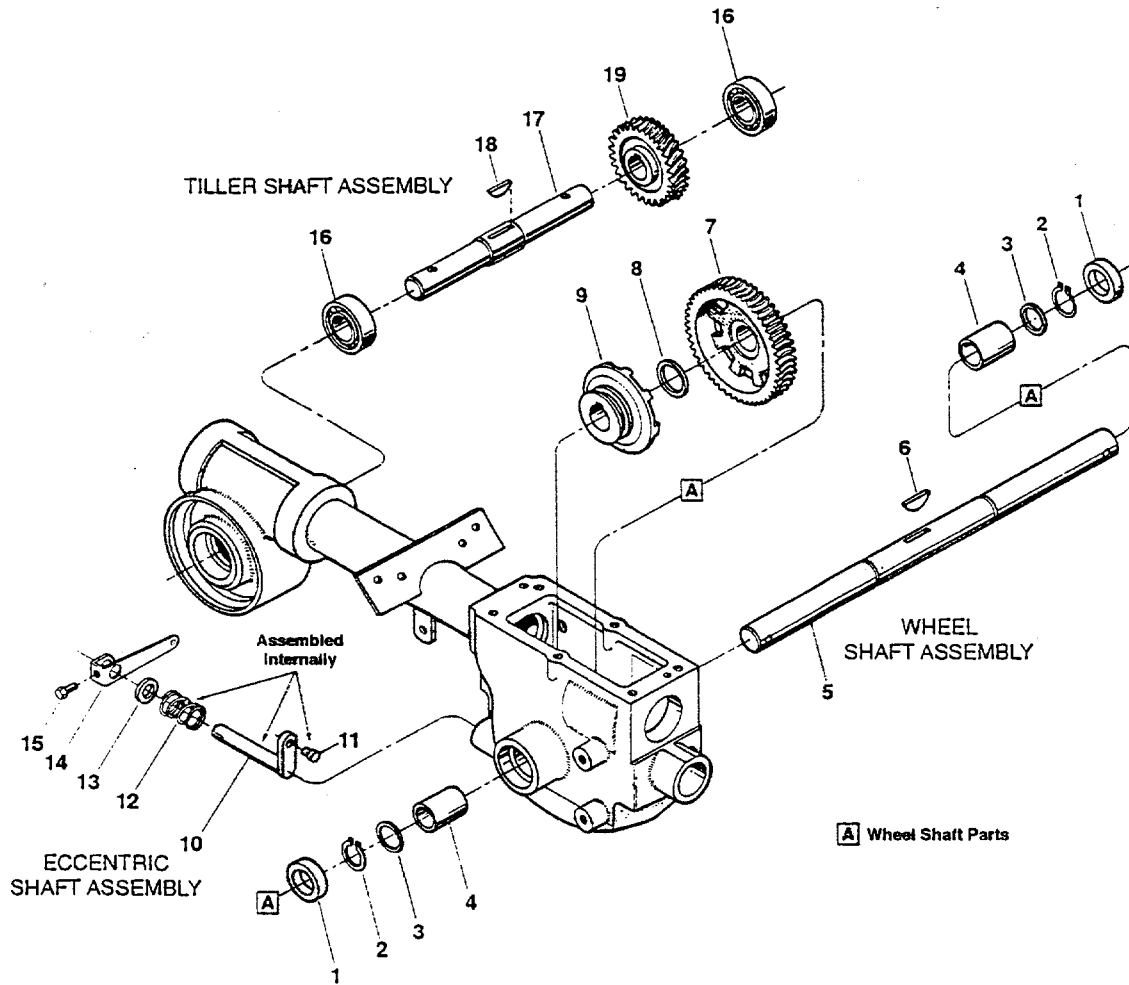
REF No.	PART No.	DESCRIPTION	QTY.
1	1185506	Locknut-hex, 3/8-16.....	1
2	1110043	Screw-hex hd, 3/8-16 x 1-1/4**...	1
3	1909266	Pulley-idler, reverse tiller direction	1
4	9193	Pulley-idler, forward tiller direction	1
5	1113-1	Spacer.....	1
6	9338	Hairpin Cotter.....	2
7	1110108	Locknut-hex, 3/8-16.....	2
8	1186230	Nut-hex, 5/16-18.....	2
9	1100242	Lockwasher-5/16.....	2
10	20545	Washer-plain, 5/16.....	2
11	9479	Pivot Bushing.....	2
12	1916192001	Idler Arm-left, forward tiller direction.....	1
13	1909682001	Idler Arm-right, reverse tiller direction.....	1
14	1492	Spring.....	1

REF No.	PART No.	DESCRIPTION	QTY.
15	20517-01	Forward Link.....	1
16	20517-02	Reverse Link.....	1
17	9340	Pin.....	2
18	1916194001	Mounting Bar.....	2
19	1111607	Screw-hex hd., 5/16-18 x 2-1/4**	2
20	1916195001	Shifting Base.....	1
21	20553	Spacer-Bushing.....	2
22	9532	Klip Ring.....	1
23	20546	Washer-pivot.....	1
24	1916196001	Bellcrank.....	1
25	1100043	Screw-hex hd., 3/8-16 x 1-1/4**..	1
26	1916897	Pivot-for Reverse Clutch lever.....	1
27	20532	Bushing-bellcrank.....	1
28	1186331	Screw-flanged hex hd., 5/16-18 x 1*.....	4

** Specify GRADE 5 if ordering part locally.

Not For Resale

WHEEL SHAFT, ECCENTRIC SHAFT AND TILLER SHAFT ASSEMBLIES

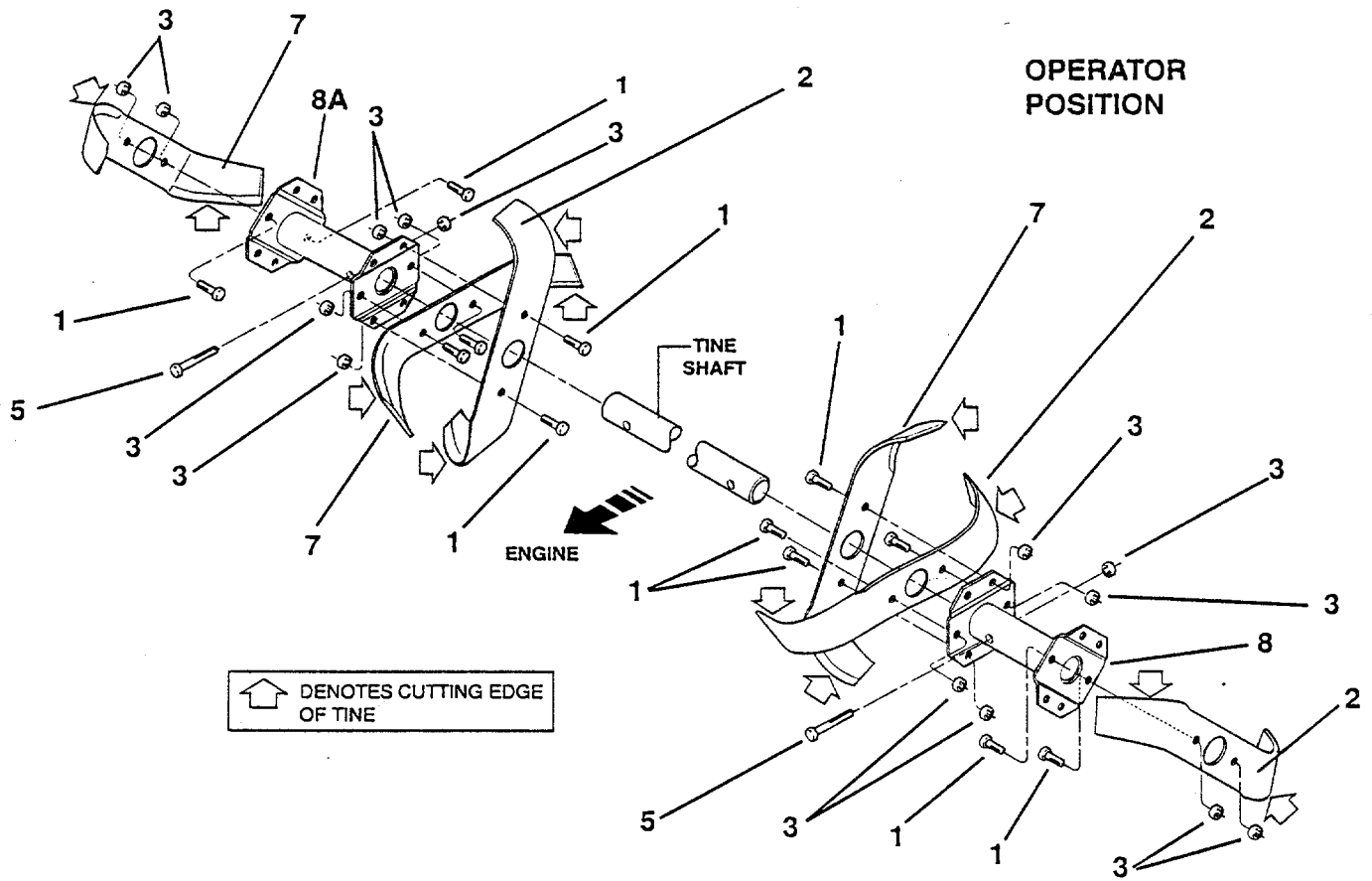


REF No.	PART No.	DESCRIPTION	QTY.
1	9621	Oil Seal—left and right sides	2
2	9511	Ring—retaining, heavy-duty, external	2
3	1166-1	Shim—1-1/64 I.D., .062 thick	As Req'd
---	1166-2	Shim—as above, but .030 thick	As Req'd
---	1166-3	Shim—as above, but .015 thick	As Req'd
---	1166-4	Shim—as above, but .010 thick	As Req'd
4	1086	Bushing	2
5	1916711	Wheel Shaft (axle)	1
6	9373	Key—hi-pro (1/4 x 1-5/16), clutch to wheel shaft.....	1
7	20914	Gear—wheel drive (worm gear), cast iron	1

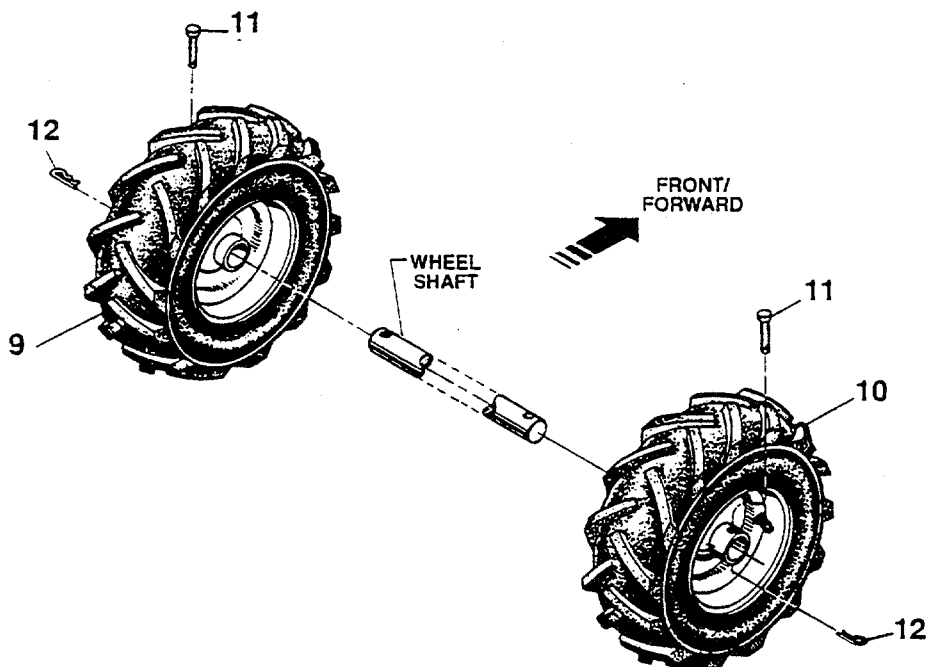
REF No.	PART No.	DESCRIPTION	QTY.
8	9935	Shim—between key and gear (1.016 I.D. x 1.468 O.D. x .062 thick).....	1
9	20712	Clutch—wheel drive, cast iron.....	1
10	20699	Eccentric Shaft—wheel clutch shifting	1
11	1442	Pin—eccentric shaft.....	1
12	9055	Spring.....	1
13	9622	Oil Seal—eccentric shaft	1
14	20757	Lever—eccentric shaft	1
15	1100#B04	Screw—hex hd., 1/4-20 x 1/2*	1
16	97074	Ball Bearing—for tiller shaft	2
17	1916709	Tiller Shaft	1
18	1104	Key—woodruff, 1/4 x 1-1/4, for tiller shaft/worm gear	1
19	1904279	Worm Gear—bronze, tiller drive....	1

* Specify GRADE 5 if ordering part locally.

TINES



WHEELS



TINES, WHEELS

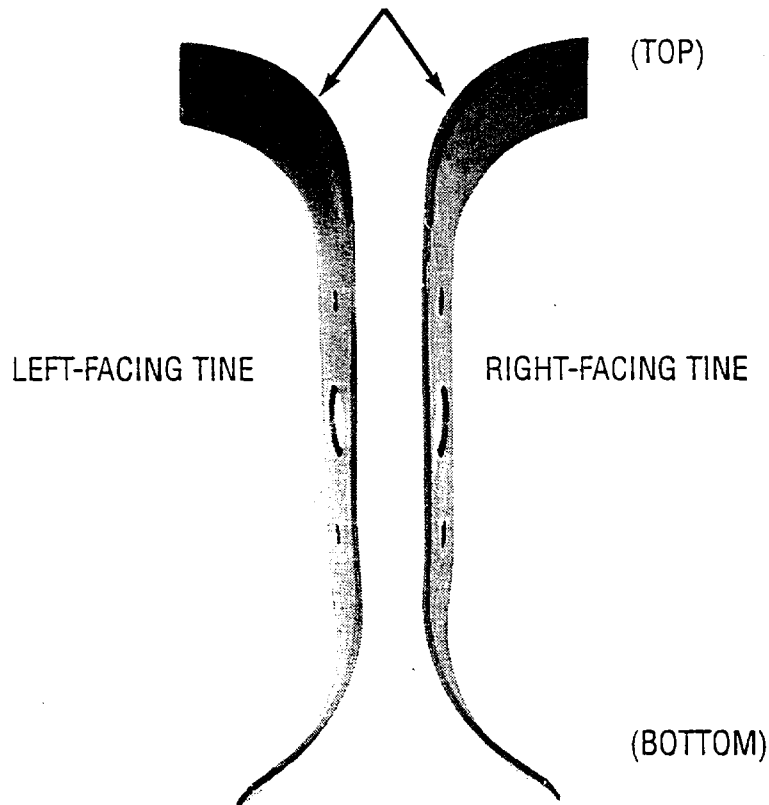
REF No.	PART No.	DESCRIPTION	QTY.	REF No.	PART No.	DESCRIPTION	QTY.
1	1100068	Screw-hex hd., 3/8-16 x 3/4*	12	9	1915056	Wheel & Tire Assy-left side	1
2	1985101	Tine- twin-edged, right facing.....	3	10	1915057	Wheel & Tire Assy-right side.....	1
3	1733398	Hex Locknut, 3/8-16	14	11	9380	Clevis Pin-.312 x 1-3/4 long	2
5	1982612	Screw-hex hd., 3/8-16 x 2, GRADE 8.....	2	12	9338	Hitch Pin	2
7	1985100	Tine- twin-edged, left facing.....	3				
8	1916693001	Tine Holder- left side	1				
8A	1916694001	Tine Holder- right side.....	1				

IMPORTANT:

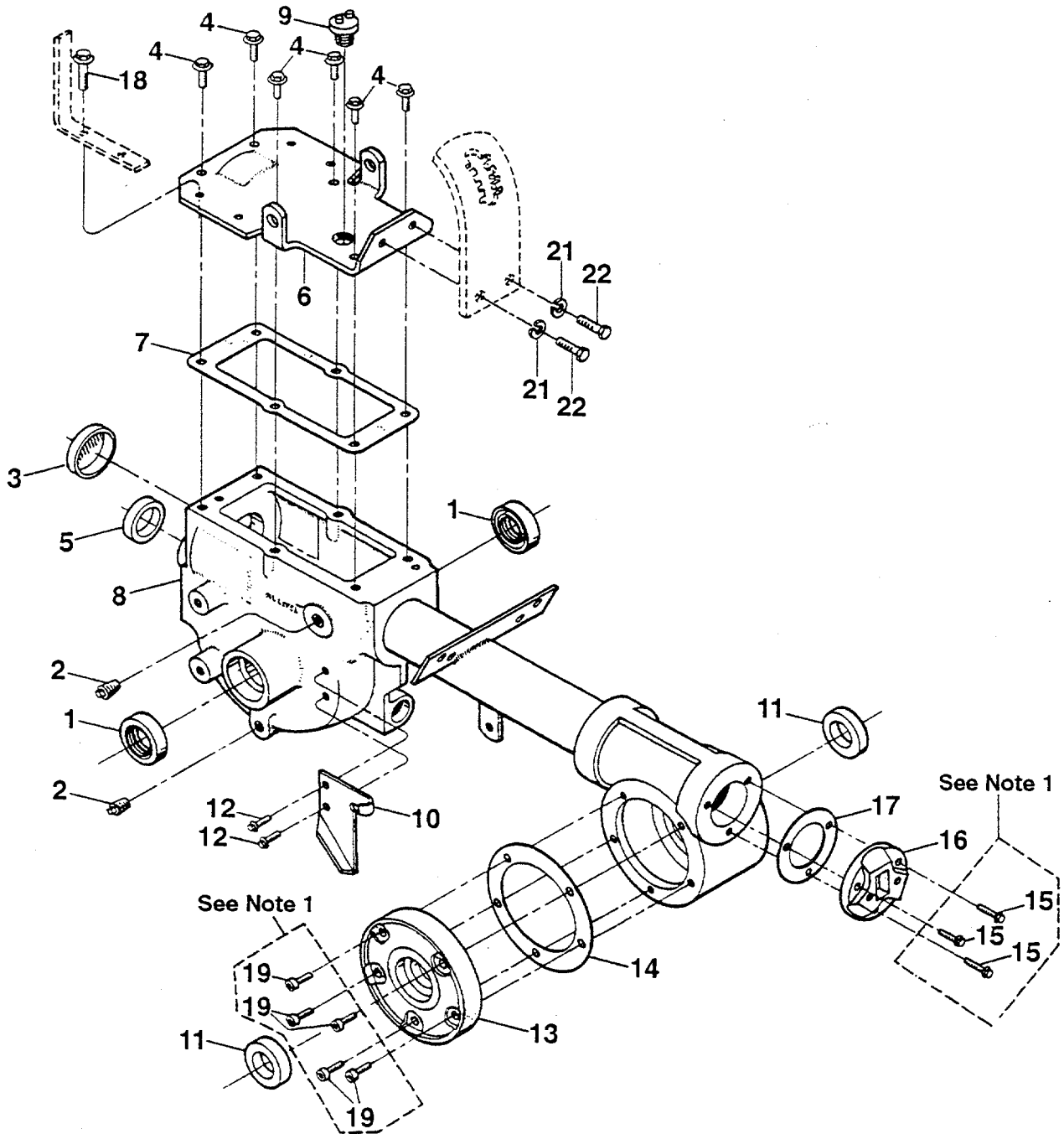
Left and right sides of tiller are determined by standing in the operator position and facing the direction of forward travel.

IMPORTANT: LEFT AND RIGHT SIDES OF TILLER ARE DETERMINED BY STANDING IN THE OPERATOR POSITION (BEHIND THE HOOD) AND FACING THE DIRECTION OF FORWARD TRAVEL.

MOUNT TINES SO THE CUTTING EDGE AT THE
TOP OF EACH TINE FACES THE OPERATOR



TRANSMISSION HOUSING, COVERS, SEALS, GASKETS AND PLUGS



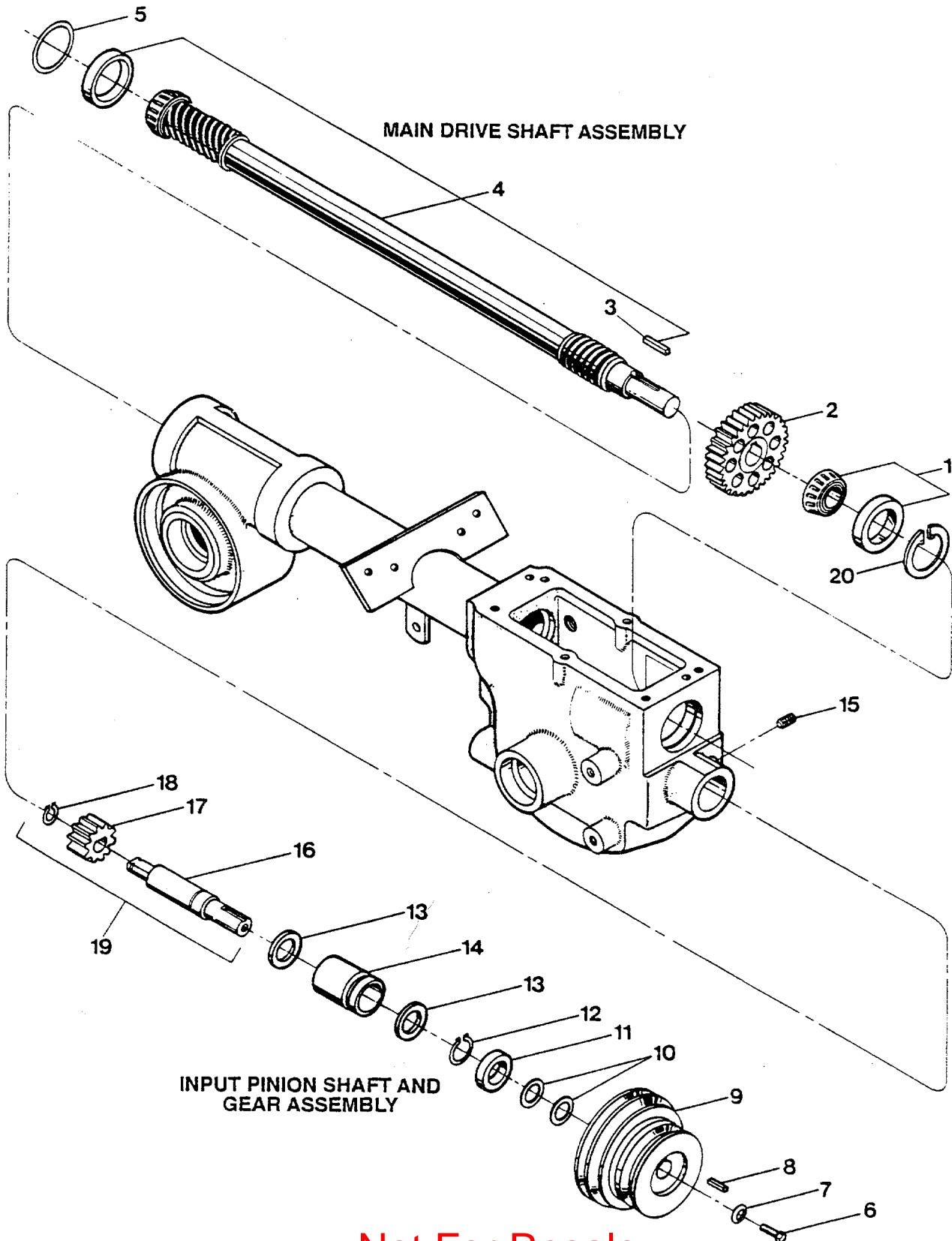
NOTE 1: THESE SCREWS ARE A SPECIAL SEALING SCREW THAT CAN NOT BE REUSED WITHOUT RISKING THE LOSS OF TRANSMISSION OIL. IF THESE SCREWS ARE LOOSENED OR REMOVED, THEY MUST BE REPLACED WITH NEW HARDWARE.

TRANSMISSION HOUSING, COVERS, SEALS, GASKETS AND PLUGS

REF No.	PART No.	DESCRIPTION	QTY.	REF No.	PART No.	DESCRIPTION	QTY.
1	9621	Oil Seal—double lip, wheel shaft, right and left sides.....	2	14	1129-1	Gasket—tiller housing cover, .010 (fits all covers)	As Req'd
2	9726	Plug—pipe, 1/4, oil level hole and gear oil drain hole.....	2	15	1915089	Screw Kit: includes three (3) 1/4-20 x 7/8" self-sealing screws.....	As Req'd
3	97076	Seal—transmission bore	1	16	1900881001	Cap—rear bearing.....	1
4	1186329	Screw—flanged hex hd., 5/16-18 x 3/4*	6	17	1124-2	Gasket—rear bearing cap, .010 thick.....	As Req'd
5	85030	Oil Seal—input pinion shaft	1	18	1186331	Screw—flanged hex hd., 5/16-18 x 1*	4
6	1916193001	Cover—top of transmission.....	1	19	1915087	Screw Kit: includes five (5) 1/4"-20 x 5/8" self-sealing screws	As Req'd
7	20694	Gasket—transmission top cover.....	1	20	----	This Ref. No. not used	
8	20893	Transmission case, tube and rear housing assembly.....	1	21	1100243	Lockwasher—3/8.....	2
9	9467	Plug—gear oil fill hole	1	22	1100068	Screw—hex hd., 3/8-16 x 3/4*	2
10	1917101001	Plate—wheel drive cable mounting.	1				
11	97073	Oil Seal—tiller shaft, left and right sides.....	2				
12	90038	Screw—flanged hex hd., 5/16-18 x 5/8*	2				
13	1916199001	Cover—tiller housing, left side.....	1				

* Specify GRADE 5 if ordering part locally.

DRIVE SHAFT, INPUT PINION SHAFT AND GEAR ASSEMBLIES



Not For Resale

www.SmallEngineDiscount.com

DRIVE SHAFT

REF No.	PART No.	DESCRIPTION	QTY.	REF No.	PART No.	DESCRIPTION	QTY.
1	1714	Bearing—tapered roller with race..	1	5	1224-1	Shim—rear bearing cap, .010 thick (see Note 1 below)	As Req'd
2	20718	Gear—spur, main drive shaft.....	1	5	1224-2	Shim—same as above, but .030 thick (see Note 1).....	As Req'd
3	9301	Key—3/16 sq. x 1.....	1	5	1224-3	Shim—same as above, but .005 thick (see Note 1).....	As Req'd
4	1916765	Drive Shaft—main drive shaft is one-piece with integral, single-lead work-hardened worm at front to drive the wheel worm gear, and integral six-lead work-hardened worm at rear to drive the tiller gear (also includes pressed-on #1714 rear roller bearing, race for bearing and #9301 key).....	1	...	1325C	Shim Set—includes the following shims: two 1224-1; two 1224-2; one #1224-3	As Req'd

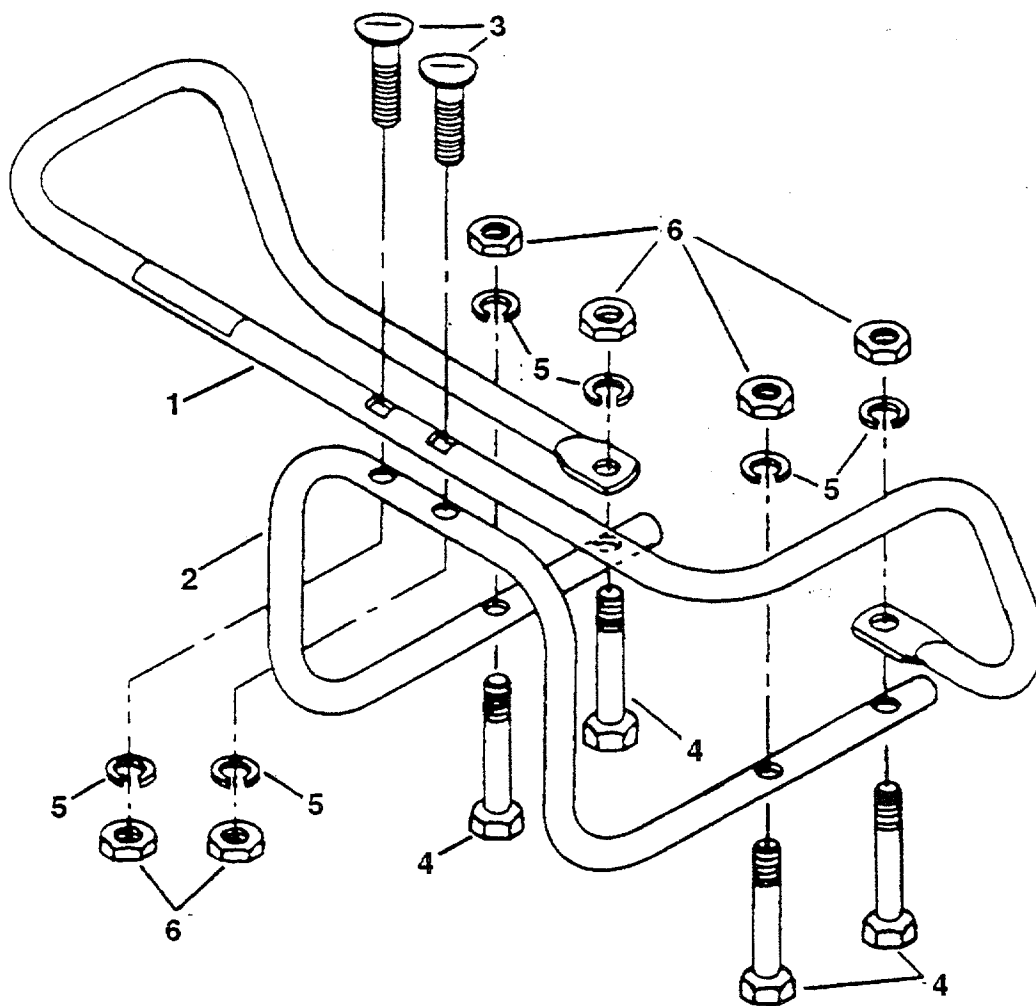
NOTE 1—Shim between drive shaft rear bearing and rear bearing cap to achieve 5-to-10 thousandths of an inch (.005-.010) end play on drive shaft

INPUT PINION SHAFT & GEAR ASSEMBLIES

REF No.	PART No.	DESCRIPTION	QTY.	REF No.	PART No.	DESCRIPTION	QTY.
6	1100004	Screw—hex hd., 5/16-24 x 3/4* ...	1	15	9677	Set Screw—5/16-18 x 3/8*	1
7	9944	Washer—disc spring (concave surface faces pulley)	1	16	20791	Input Pinion—steel shaft.....	1
8	9301	Key—3/16 sq. x 1.....	1	17	20792	Gear—input pinion	1
9	20507	Pulley—transmission drive	1	18	9093	Retainer—snap ring, external.....	1
10	1440	Washer—support.....	2	19	20799	Pinion Assy—(incl. one each of Ref. No.'s 16, 17 and 18	As Req'd
11	85030	Oil Seal—input pinion shaft, front.	1	20	9517	Retainer—snap ring, internal	1
12	9500	Ring—retaining (snap ring), external	1	21	94018	Washer—sheave shoulder	1
13	9953	Washer—thrust.....	2				
14	9428	Bushing	1				

* Specify GRADE 5 if ordering part locally.

BUMPER ASSEMBLY



REF No.	PART No.	DESCRIPTION	QTY.
1	1916714001	Bumper-top section	1
2	1904758001	Bumper-bottom section	1
3	1731025	Bolt-curved head, 5/16-18 x 2 (special bolt); also see #1915811 hardware kit	2
4	1111608	Bolt-hex hd., 5/16-18 x 2-1/2*, not avail. separately (order #1915811 hardware kit	4
5	1100242	Lockwasher-5/16, not avail. separately (order #1915811 hardware kit	6

REF No.	PART No.	DESCRIPTION	QTY.
6	1186230	Nut-hex, 5/16-18, not avail. separately (order #1915811 hardware kit	6
---	1915811	Hardware Kit: two #1731025 curved head bolts; four #1111608 hex hd. bolts; six #1100242 lock- washers; six #1186230 hex nuts	1

NOTES

Parts Ordering Information

If you need service or parts:

For service assistance or parts, contact your local authorized dealer or the factory.

Your local dealer or service department will need to know the model/serial numbers of the unit to provide the most efficient service. See below for information on how to identify and record the identification numbers for the unit.

If you need engine service or parts:

For engine service or parts, contact your local authorized engine dealer. Look in the yellow pages of the phone book under "Engines-Gasoline" for the name of your nearest authorized engine dealer. An authorized engine dealer can handle all parts, repairs, and warranty service concerning the engine.

Note:

All replacement parts must conform to our rigid quality specifications. Although some replacement parts we provide may vary slightly in shape, color or texture from the original parts, any variations will not affect the fit or performance of these parts on your unit.



WARNING

We urge using only genuine replacement parts which meet all the latest requirements. Replacement parts manufactured by others could present safety hazards, even though they may fit on the unit!

IMPORTANT:

Left and right sides of the unit are determined by standing behind the unit, in the operator's position, and facing in the direction of forward travel.

NOTICE:

We reserve the right to change specifications, add improvements or discontinue the manufacture of any of our equipment without notice or obligation to purchasers of our equipment.

Identification Numbers

Record the Model/Serial Numbers here:

When ordering parts from us or your local servicing dealer, you will need to provide the unit's model/serial number. For your convenience and ready reference, record this information below.

Product Model/Serial Number _____

Engine Model / Serial Spec. Numbers _____

Date of Purchase _____

Name of Dealer _____

For customer assistance, contact your nearest authorized dealer or:

GARDEN WAY INCORPORATED • 1 Garden Way • Troy, New York 12180
Customer Service: 1-800-437-8686 • Technical Service: 1-800-520-5520 • Parts Service: 1-800-648-6776
• FAX: (518) 391-7332 • WEBSITE: www.troybilt.com

Outside the United States and Canada:

Customer Service: (518) 391-7007 • Technical Service: (518) 391-7008 • Parts Service: (518) 391-7006 • FAX (518) 391-7332