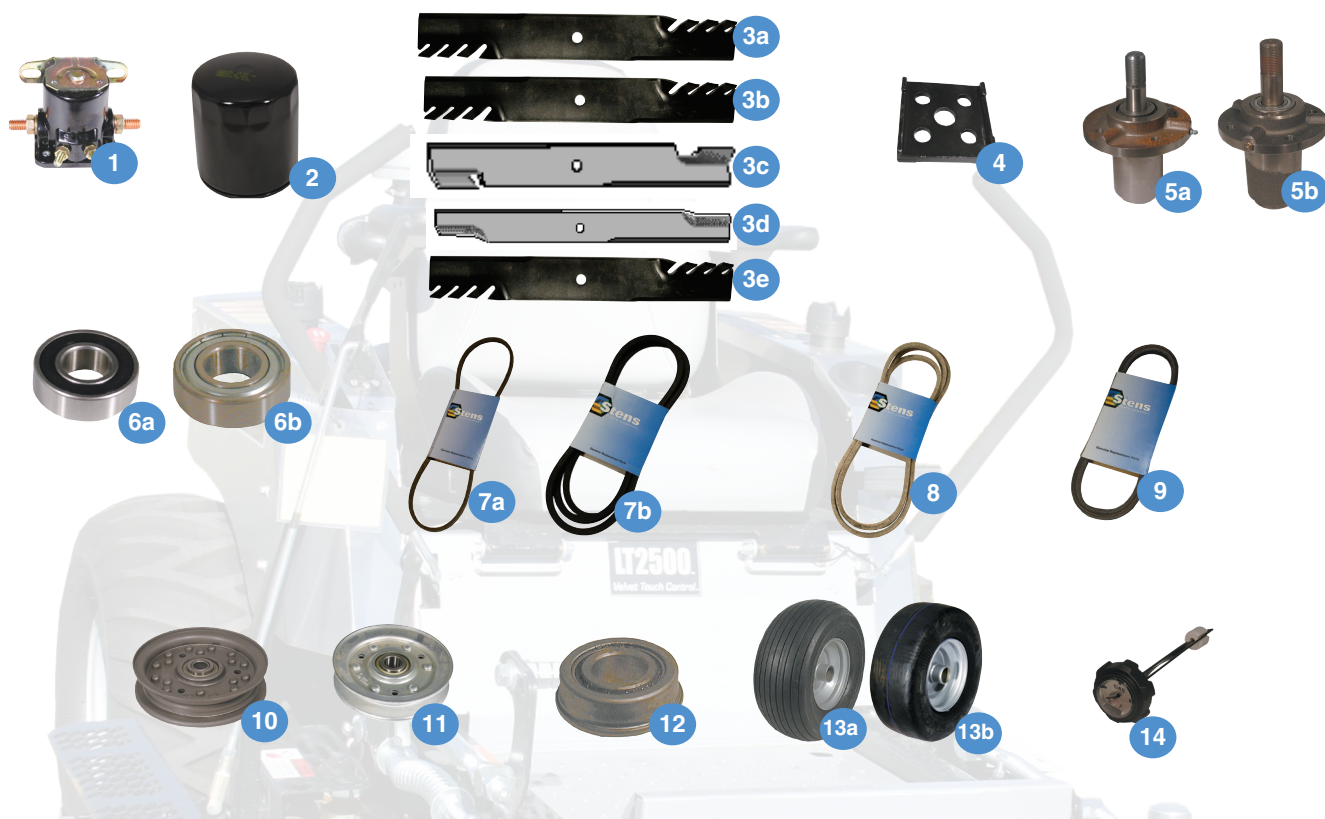


## Dixie Chopper



REF. NO.	DESCRIPTION	REPLACES DIXIE CHOPPER NO.	STENS NO.
1.	Starter Solenoid	20253	435-016
2.	Transmission Filter	68140/60105	120-380
3. a.	Silver Streak Blade for 50" deck, 3" W x 17" L x 5/8" CH	30227-N	302-717
b.	Silver Streak Blade for 60" deck, 3" W x 20 1/2" L x 5/8" CH	30227-60N	302-820
c.	Blade for 60" deck, 3" W x 20 7/16" L x 5/8" CH	30227-60N	315-250
d.	Blade for 72" deck, 3" W x 24" L x 5/8" CH	30227-72N	315-499
e.	Silver Streak Blade for 72" deck, 3" W x 24" L x 5/8" CH	30227-72N	302-824
4.	Blade Adapter	900003	405-650
5. a.	Spindle Assembly (center)	10161-L	285-190
b.	Spindle Assembly (outside)	10161	285-191
6. a.	Inner Front Wheel Bearing	67205	230-003
b.	Inner Front Wheel Bearing	67205	230-019
7. a.	Engine to Deck Belt, 7/8" W x 162" L, 72" cut	97346	265-122
b.	Engine to Deck Belt, 5/8" W x 83" L, 42" and 60" cut	65080	265-131
8.	Deck Belt, 5/8" W x 130 1/4" L, 60" deck	30236-0	265-619
9.	Engine to Trans. Belt, 5/8" W x 40 1/2" L	20256	265-126
10.	Deck Flat Idler	30224	280-850
11.	Transmission V-Idler	30234	280-333
12.	Wheel Bearing (outer front)	10205	215-370
13. a.	Wheel Assembly, 13-6.50-6, Rib	97166/10202	175-681
b.	Wheel Assembly, 13-5.00-6, Smooth	97166/400130	175-509
14.	Gas Cap w/Gauge	40222	125-120