

S/N M67999 and above only

INSTALLING THE BUMPER/GUARD ON YOUR JUNIOR® MODEL TILLER



The Junior Bumper/Guard is a solid investment in tiller protection, providing extra security for the engine's carburetor, air cleaner, blower housing cover, recoil starter assembly and flywheel. It also serves as a secure handle for pulling or lifting the tiller, as well as a useful tie-down for transporting the tiller in a trailer or truck.

Installing the Bumper/Guard is really quite simple. Please follow these step-by-step instructions carefully and you should have the job completed in less than an hour. Of course, if you have any questions or problems, please get in touch with our Technical Service Department (see phone numbers and addresses on last page). We are always glad to be of further help.

Parts List

Check the contents of your Part No. 11045 Bumper/Guard Kit to make sure it contains all of the following parts (see Photo 1):

REF. NO.	PART NO.	DESCRIPTION	QTY.
1	50215	BUMPER - front	1
2	50195	GUARD - carburetor	1
3	9557	BOLT - hex hd, 5/16"-18 x 2 1/2" long	4
4	9758	BOLT - hex hd, 5/16"-18 x 1 1/2" long	1
5	9912	LOCKWASHER - spring-lock, 5/16"	5
6	9801	NUT - hex, 5/16"-18	5

HW 11049

Helpful Information

- All references to "Left" and "Right" are given from the operator's position behind the handlebars.
- Tools needed: two 1/2" wrenches.
- If the old engine mounting bolts and nuts are difficult to loosen, soak them with penetrating oil and wait a few minutes before tackling them again.
- During the assembly steps, tighten the bolts and nuts finger-tight only. This will make it easier to align the parts with their mounting holes. Later, when all of the bolts are installed, they can be tightened securely.

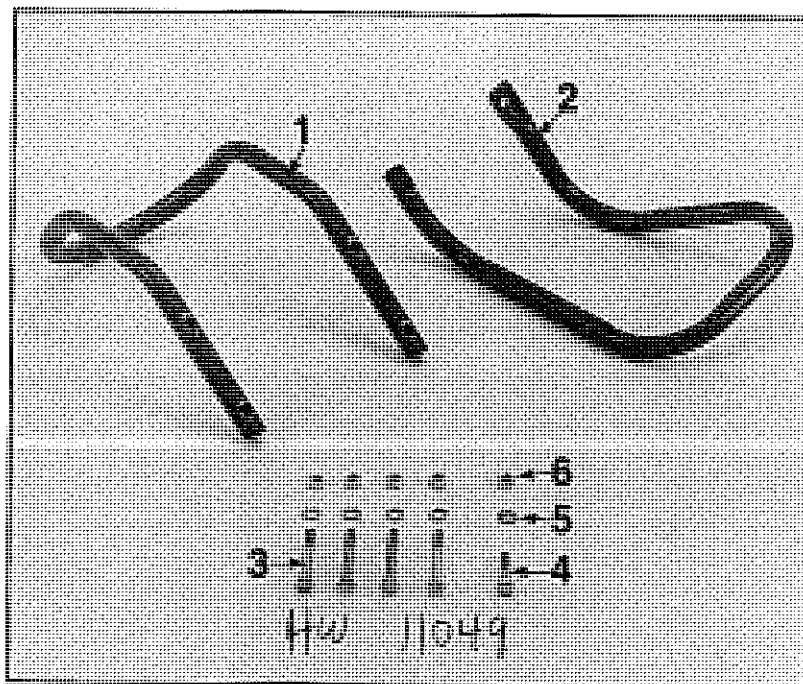


PHOTO 1: Make sure you received all of the parts shown above.

Not For Resale

www.SmallEngineDiscount.com

CAUTION

TO PREVENT PERSONAL INJURY, STOP THE ENGINE, REMOVE THE ELECTRIC START KEY, DISCONNECT THE SPARK PLUG WIRE, AND LET THE ENGINE AND MUFFLER COOL BEFORE INSTALLING THE BUMPER/GUARD.

Follow These Simple Steps:

1 On the *right* side of the engine, position the carburetor guard as shown in Photo 2 and install the new 1½" long bolt *up* through the holes in the engine mounting bracket and the rear leg of the guard (note that the throttle cable goes *above* the rear leg). Add a lockwasher and nut to the bolt and tighten finger-tight. Leave the front leg of the guard unattached at this time.

2 Remove the four bolts that secure the engine to the left and right side engine mounting brackets. See Photos 3 and 4. You will not be reusing this hardware.

CAUTION

WITH THE FOUR MOUNTING BOLTS REMOVED, THE ENGINE IS NO LONGER SECURED TO THE TILLER. BE VERY CAREFUL NOT TO LET THE ENGINE FALL OFF!

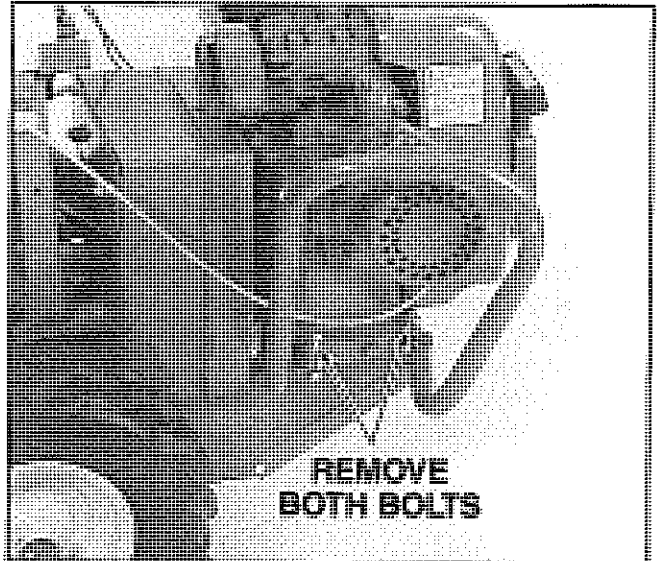


PHOTO 3: Remove right side engine mounting bolts.

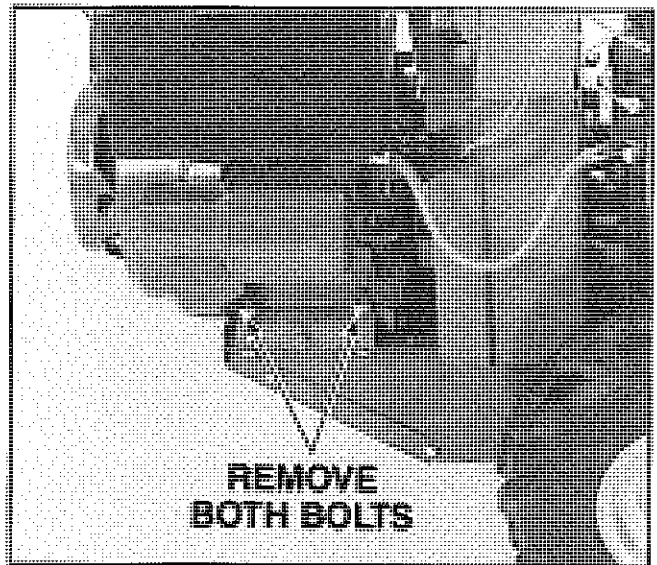


PHOTO 4: Remove left side engine mounting bolts.

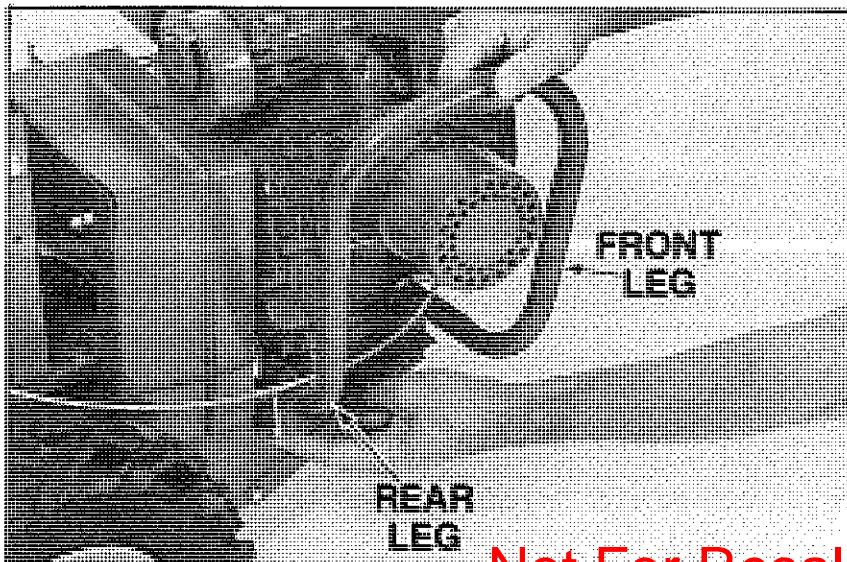


PHOTO 2: Insert bolt from below engine mounting bracket.

Not For Resale

www.SmallEngineDiscount.com

3 With the curved part of the front bumper facing *up*, insert the legs underneath the left and right side engine mounting brackets as shown in Photo 5. Next, on the *right* side of the engine, align the hole in the end of the bumper leg with the empty holes at the rear of the engine mounting bracket and the engine base. Insert a new 2½" long bolt *down* through these holes and loosely install a lockwasher and nut. See Photo 6.

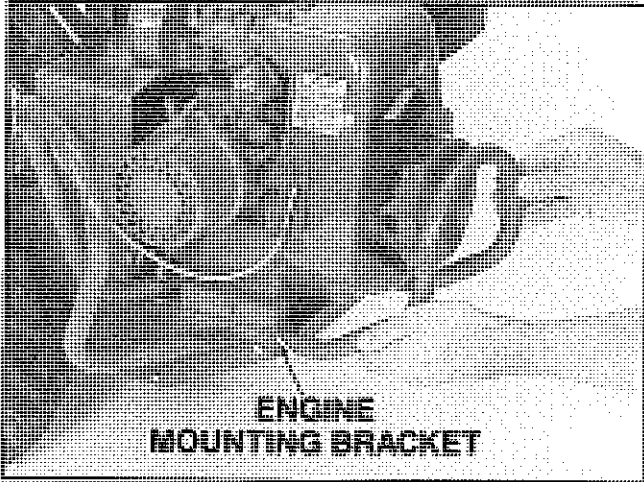


PHOTO 5: Install front bumper as shown.

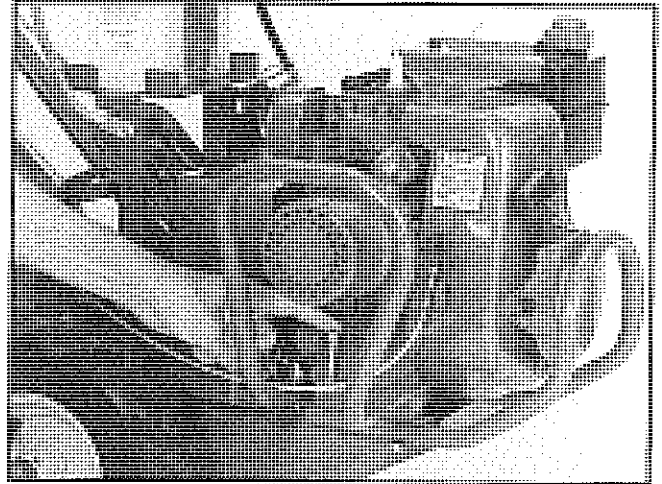


PHOTO 6: Insert bolt down through engine base.

4 While still on the *right* side of the engine, center the front leg of the carburetor guard over the empty holes at the front of the engine mounting bracket and the engine base. Insert a new 2½" long bolt *up* through the holes and loosely install a lockwasher and nut. See Photo 7.

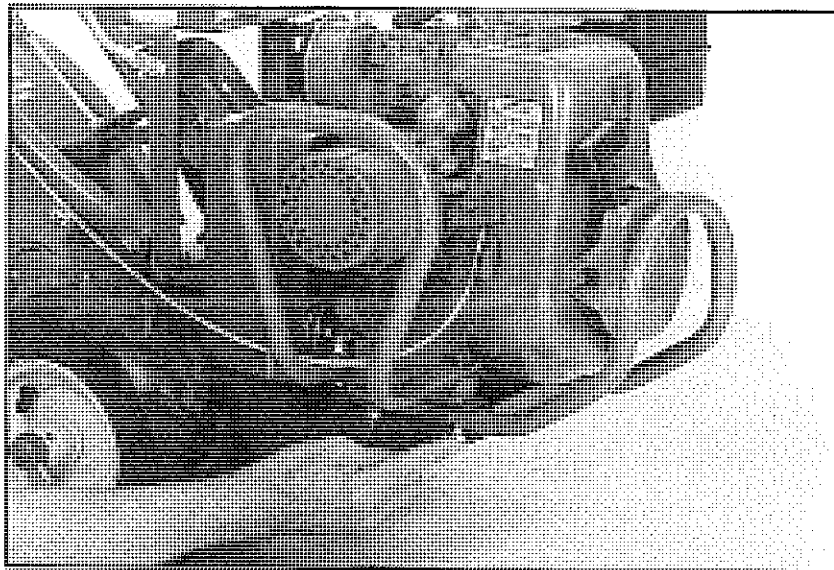


PHOTO 7: Insert bolt up through front bumper, engine mounting bracket, engine base and carburetor guard leg.

5 On the *left* side of the engine, insert two new 2½" long bolts *up* through the empty holes at the rear and front of the engine base. See Photo 8. Add lockwashers and nuts to both bolts.

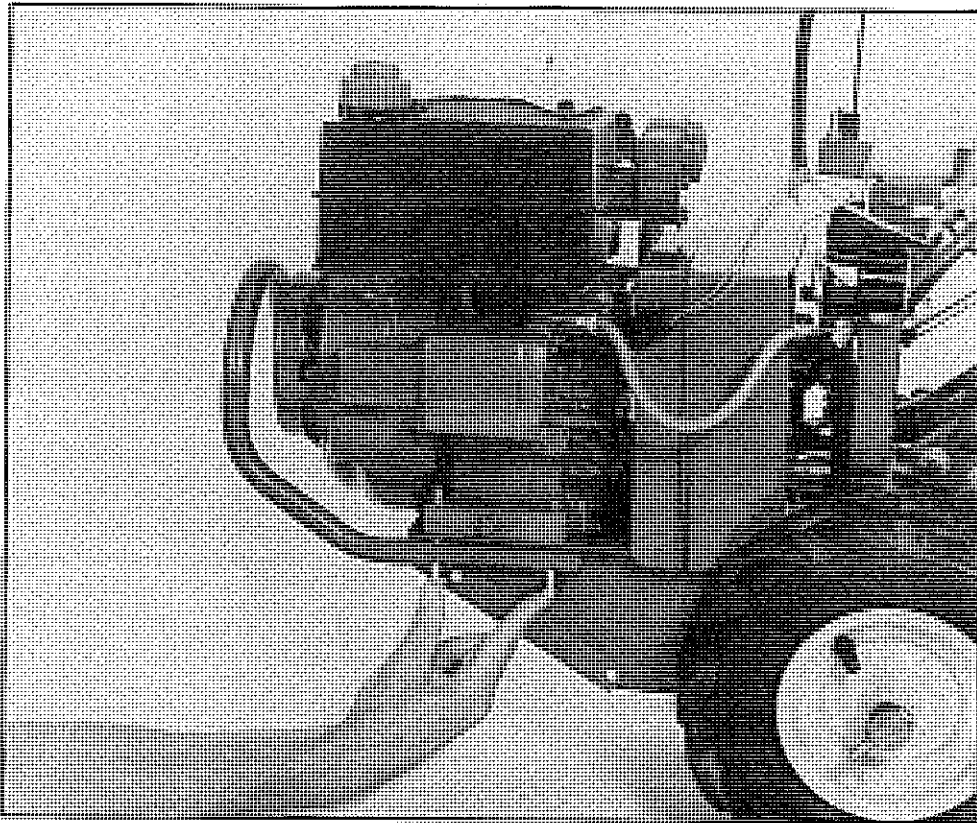


PHOTO 8: Install bolts on left side of engine.

6 With all five mounting bolts installed, use two ½" wrenches to tighten the bolts securely. The assembly of your bumper/guard is now complete.

GARDEN WAY MANUFACTURING COMPANY
102nd Street and 9th Avenue, Troy, New York 12180
Phone Toll-Free: (800) 833-6990
From Alaska Call Collect: (518) 235-6010

GARDEN WAY CANADA
514 Carlingview Drive, Rexdale, Ontario M9W 5R3
Phone Collect: (416) 674-1502